

Wildhorse Lodge
2637 Bronc Buster Loop
Steamboat Springs, Colorado

Ideal Mountain Property

www.idealmountainproperty.com

Steamboat's only luxury 1/4 share vacation home ownership opportunity

Own a multi million dollar vacation home for a fraction of the price for full ownership

Located on Lot 21 of The Range at Wildhorse Meadows comes the opportunity to own one of the finest new residence's coming to Steamboat Springs, Colorado.



- 5 full bedrooms including 4 private bedroom retreats all with attached en suites
- 5 full bathrooms and 2 powder bathrooms
- Over 5,400 square feet of luxurious living space
- Fully equipped gourmet kitchen with all the necessary appliances for the chef of the group. Featuring Monogram appliances with 48" gas range and 48" built in refrigerator.
- Ample use of stone, wood, timbers and steel throughout
- Outdoor covered eating area with ski area views
- Over 900 square feet of stamped concrete deck space, most of which is covered
- Fully furnished in a turn key state. Mountain inspired custom made furnishings and décor with high end finishes provide a luxury setting
- A state of the art audio system allows for complete control of your music experience throughout the house

The design of this home brings together mountain modern architecture with hints of rustic, offering a reminder of the ranching heritage of Steamboat Springs and the Yampa Valley. Using reclaimed wood, stone and metal, this home will be sure to impress.

Ample outdoor living space with views to the ski mountain from the front deck and from the rear of the home you will be greeted with endless western sunsets and views overlooking the wetlands and park.



Entry Level

Stately double entry door opens to this luxury residence greeting you with flagstone floors and views to the heavy timber stairwell.

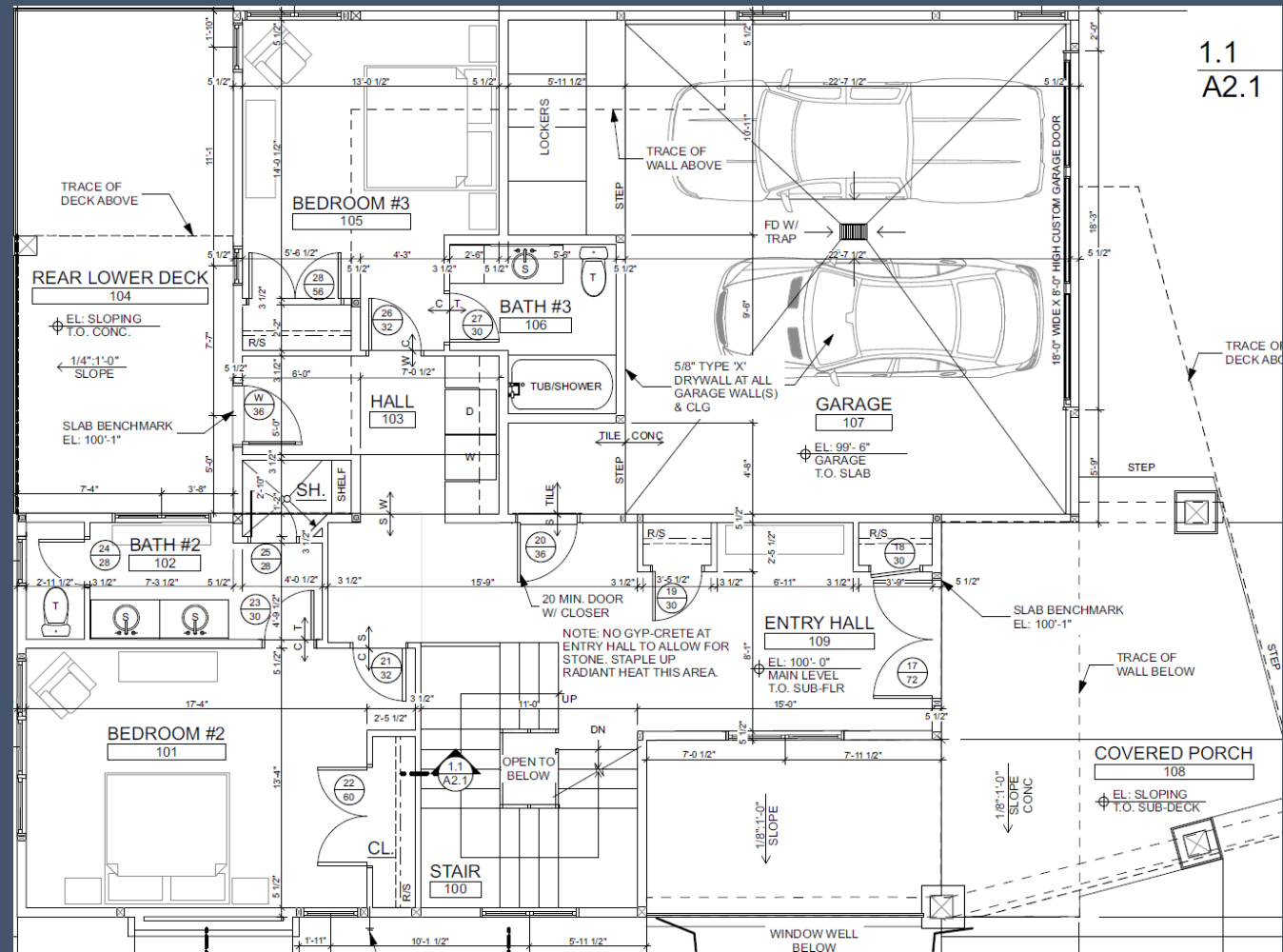
Bedroom 2 is one of three master retreats planned. Attached en suite includes double vanity and oversized steam shower.

Bedroom 3 offers a quiet retreat with queen bed and attached full bathroom.

Stamped concrete deck overlooking pond and park is a perfect place for the planned hot tub.

Oversized heated 2 car garage with large storage lockers for each owner of this residence.

Stamped concrete heated driveway and walkway provides an ice and snow free experience for guests.

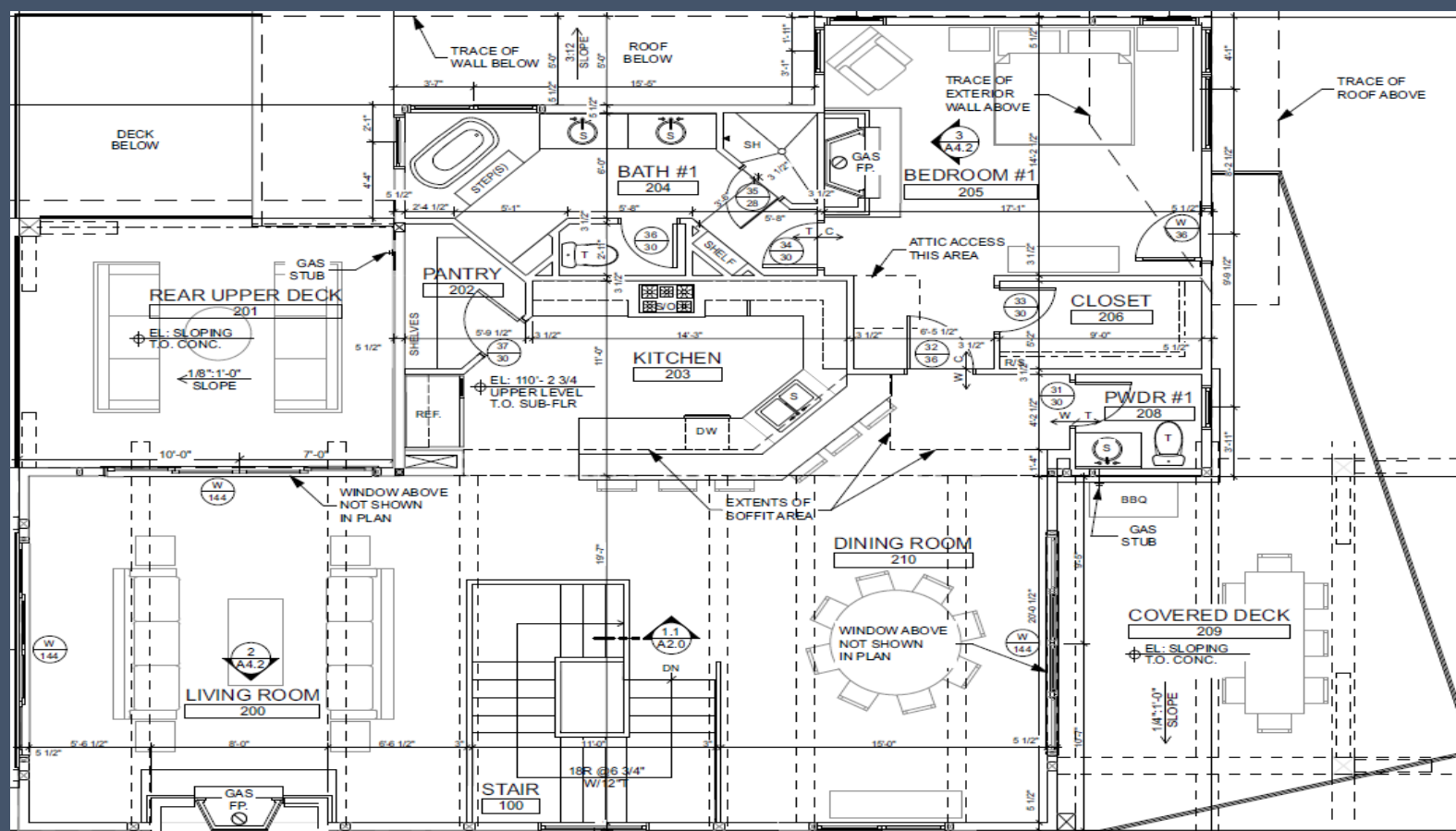


Ascending the custom timber stairwell to the upper level you will quickly realize you have entered a “grand” great room. The soaring vaulted ceilings with exposed beams and huge stone fireplace exudes luxury and warmth

Comfortable living room with custom made leather sectional offering great western views and the gourmet kitchen is a culinary dream. Dining around the custom made dining table for 12 will provide hours of enjoyment with your guests

A wall of glass, off the dining room, slides open to the outside covered dining area with mountain views. The rear deck is a perfect place to sit and enjoy the firepit, while watching the endless western sunsets

Spacious master suite with attached spa bathroom complete with air tub, oversized shower and heated radiator complete this spacious retreat



Lower Level

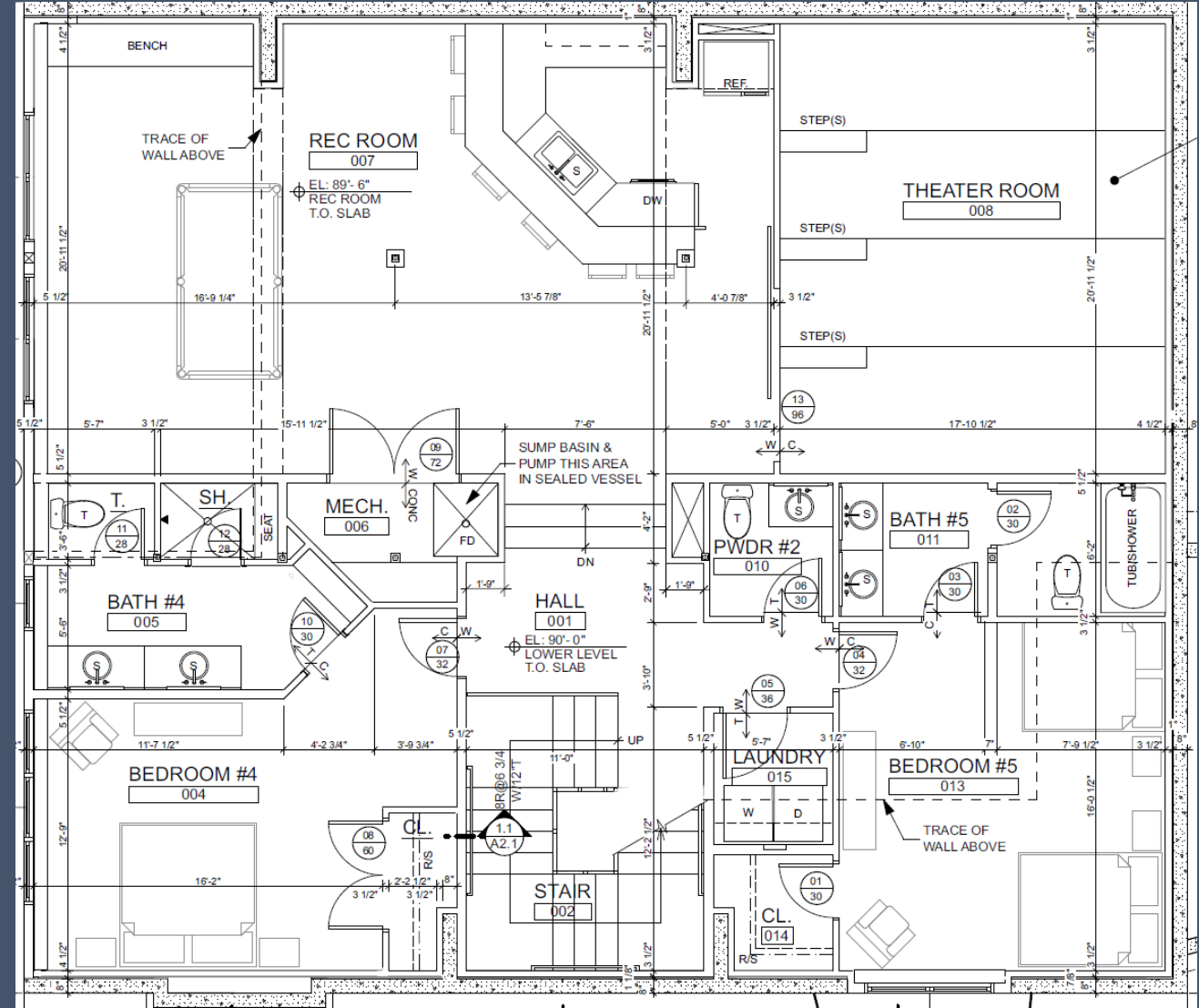
Slide open the oversized barn door to reveal this state of the art theater room. Incredible audio paired with a 115" projection screen provides guests with the very best in a home media experience. Three tiers of seating provides room for the entire group

Spacious game room offering a home entertaining experience like no other. With a Irish Pub themed room you will revel in the opportunity to serve drinks from the bar while your guests enjoy the billiards area

Bedroom 4 offers an oversized retreat with king bed and en suite offering double vanity and spa style shower

Bedroom 5 bunk room is a oversized 15'X16' room, large enough for 2 queen size bunk beds and private bathroom with double vanity

This garden level basement offers great light and views to the pond and park from bedroom 4 and rec room



Its all about location and this home has it! Incredible access to the Steamboat Mountain Village via the Wildhorse Gondola and all the surrounding amenities.



Wildhorse Lodge is located in one of Steamboat Springs premier mountain base communities providing direct access from the subdivision to the ski area village via the Wildhorse Gondola. A 5 minute walk from the home to the gondola entrance offers owners incredible access to the ski mountain.

As owners and guests of Wildhorse Lodge you will have access to the Wildhorse Athletic Club located at the Trailhead Lodge, next to the Gondola entrance. Huge heated outdoor pool, hot tub grotto with 4 hot tubs and fire pit. state of the art work out facility, rec room and locker rooms with showers round out the amenities provided to all guests and owners.



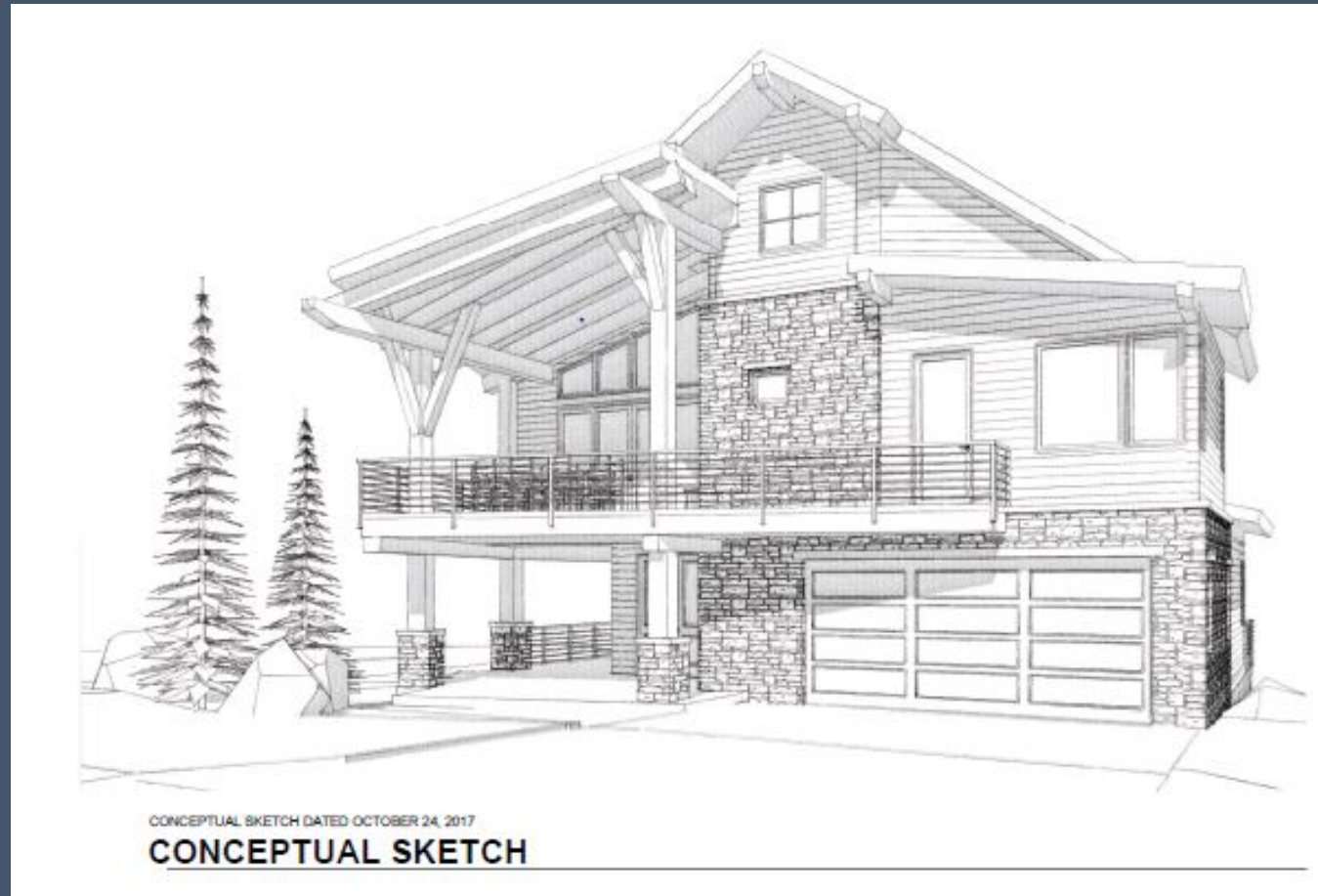
Pricing Details

Ownership for one quarter share being offered at
\$825,500 per quarter share

Six 2-weeks stays for 12 total weeks per year

Deeded ownership as Tennant in Common

Completed home sold in a turnkey state including but not limited to fully completed home including landscaping, completely furnished home with custom leather furnishings, mountain inspired décor, luxurious linens and bedding, fully stocked kitchen, smart TV's in all bedrooms and living areas, smart home offering lighting controls, heated driveway and walkway, whole house music system with mobile interface and plenty of owners storage in garage and in home.



CONCEPTUAL SKETCH DATED OCTOBER 24, 2017

CONCEPTUAL SKETCH